

Floor Plans: 2163 Winding Way

Approx.: 2,075 sq. ft. above grade (MPAC)

Approx.: 3,033 sq. ft. including lower level (MPAC)

AB&A

AMY BRAY & ASSOCIATES



AMY BRAY & ASSOCIATES

Amy Bray | Sales Representative, Sr. Vice President - Sales

Alexandria Wood | Sales Representative

c 416.802.5017

t 905.845.0024

amybrayassociates@sothebysrealty.ca

amybrayandassociates.ca

Sotheby's | Canada
INTERNATIONAL REALTY

For additional information,
visit amybrayandassociates.ca

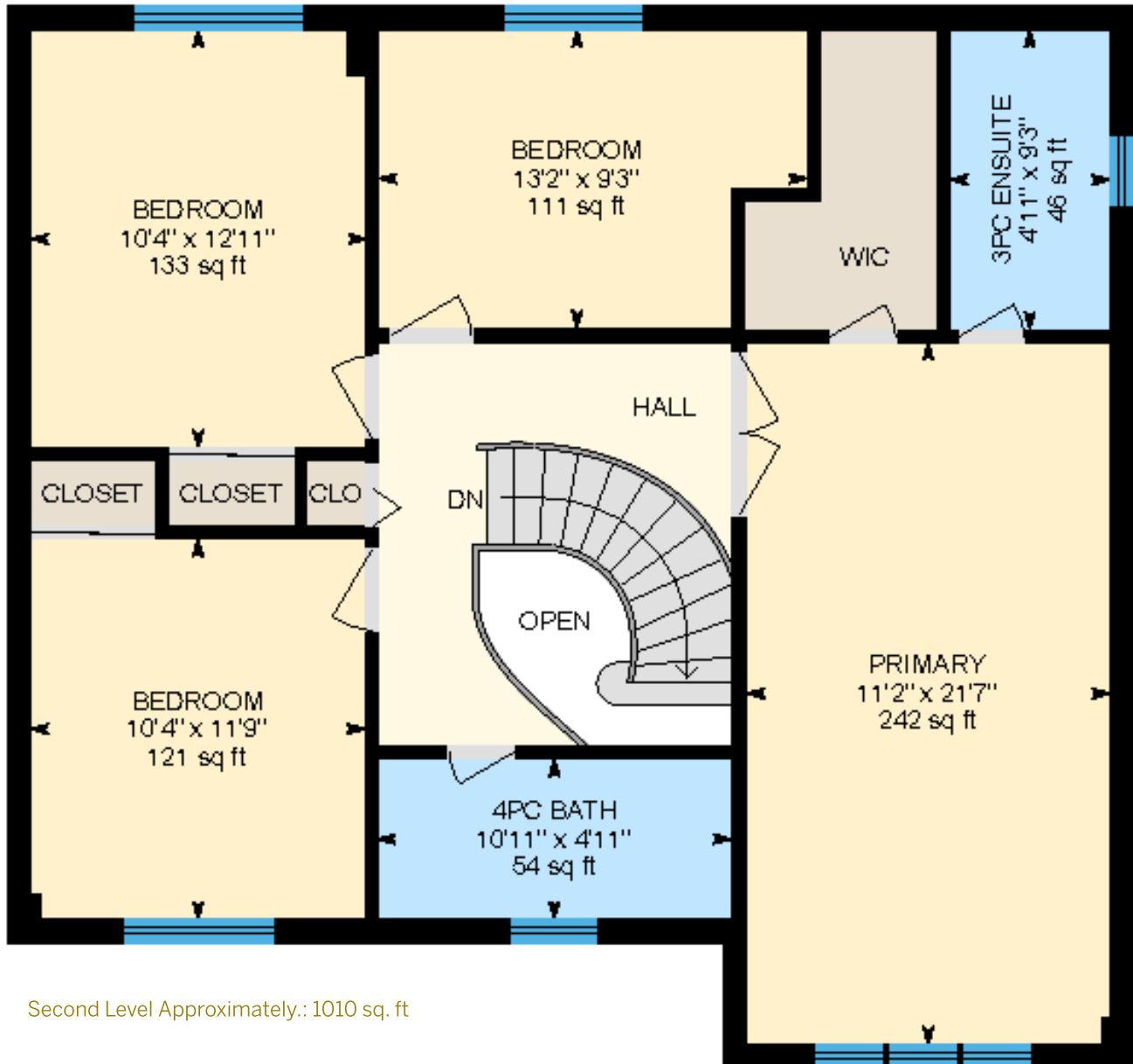
Floor Plans: 2163 Winding Way

Approx.: 2,075 sq. ft. above grade (MPAC)

Approx.: 3,033 sq. ft. including lower level (MPAC)

AB&A

AMY BRAY & ASSOCIATES



Second Level Approximately.: 1010 sq. ft



AMY BRAY & ASSOCIATES

Amy Bray | Sales Representative, Sr. Vice President - Sales

Alexandria Wood | Sales Representative

c 416.802.5017

t 905.845.0024

amybrayassociates@sothebysrealty.ca

amybrayandassociates.ca

Sotheby's | Canada
INTERNATIONAL REALTY

For additional information,
visit amybrayandassociates.ca

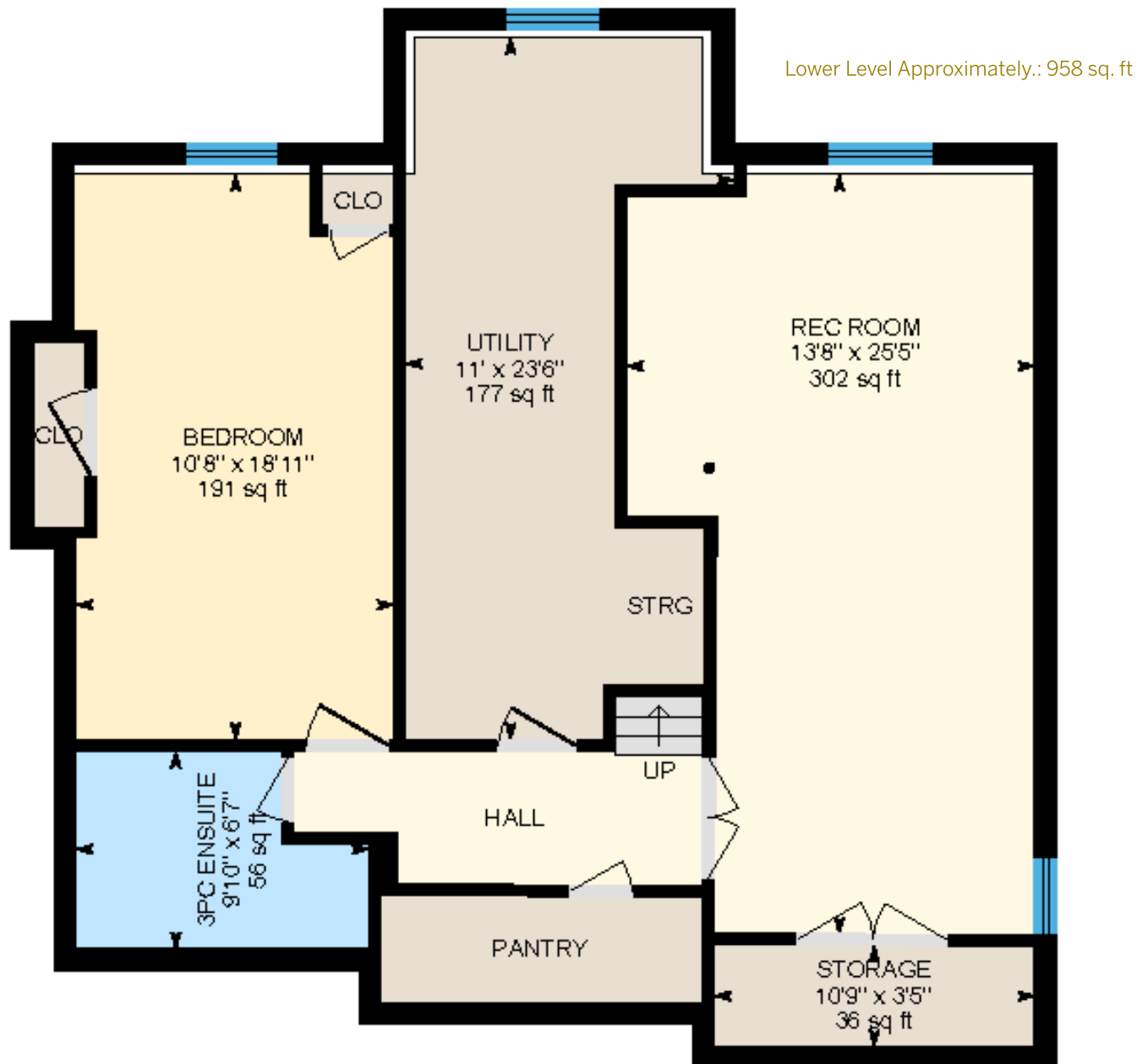
Floor Plans: 2163 Winding Way

Approx.: 2,075 sq. ft. above grade (MPAC)

Approx.: 3,033 sq. ft. including lower level (MPAC)

AB&A

AMY BRAY & ASSOCIATES



AMY BRAY & ASSOCIATES

Amy Bray | Sales Representative, Sr. Vice President - Sales

Alexandria Wood | Sales Representative

c 416.802.5017

t 905.845.0024

amybrayassociates@sothebysrealty.ca

amybrayandassociates.ca

Sotheby's | Canada
INTERNATIONAL REALTY

For additional information,
visit amybrayandassociates.ca